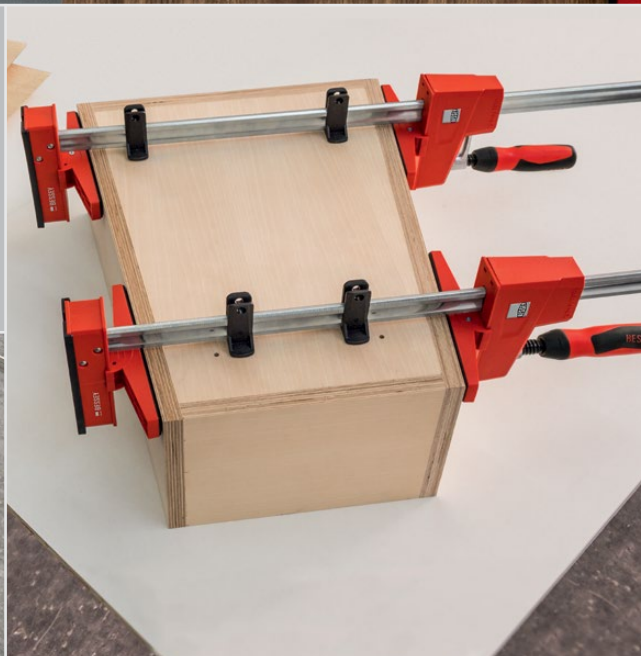
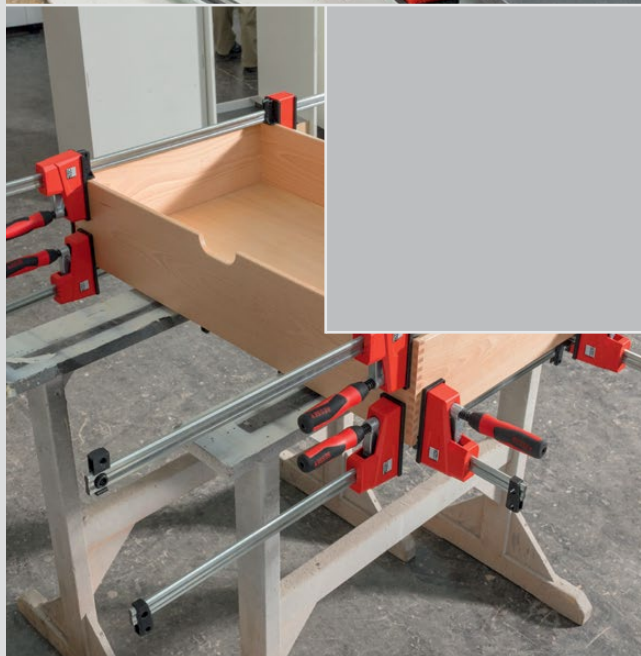
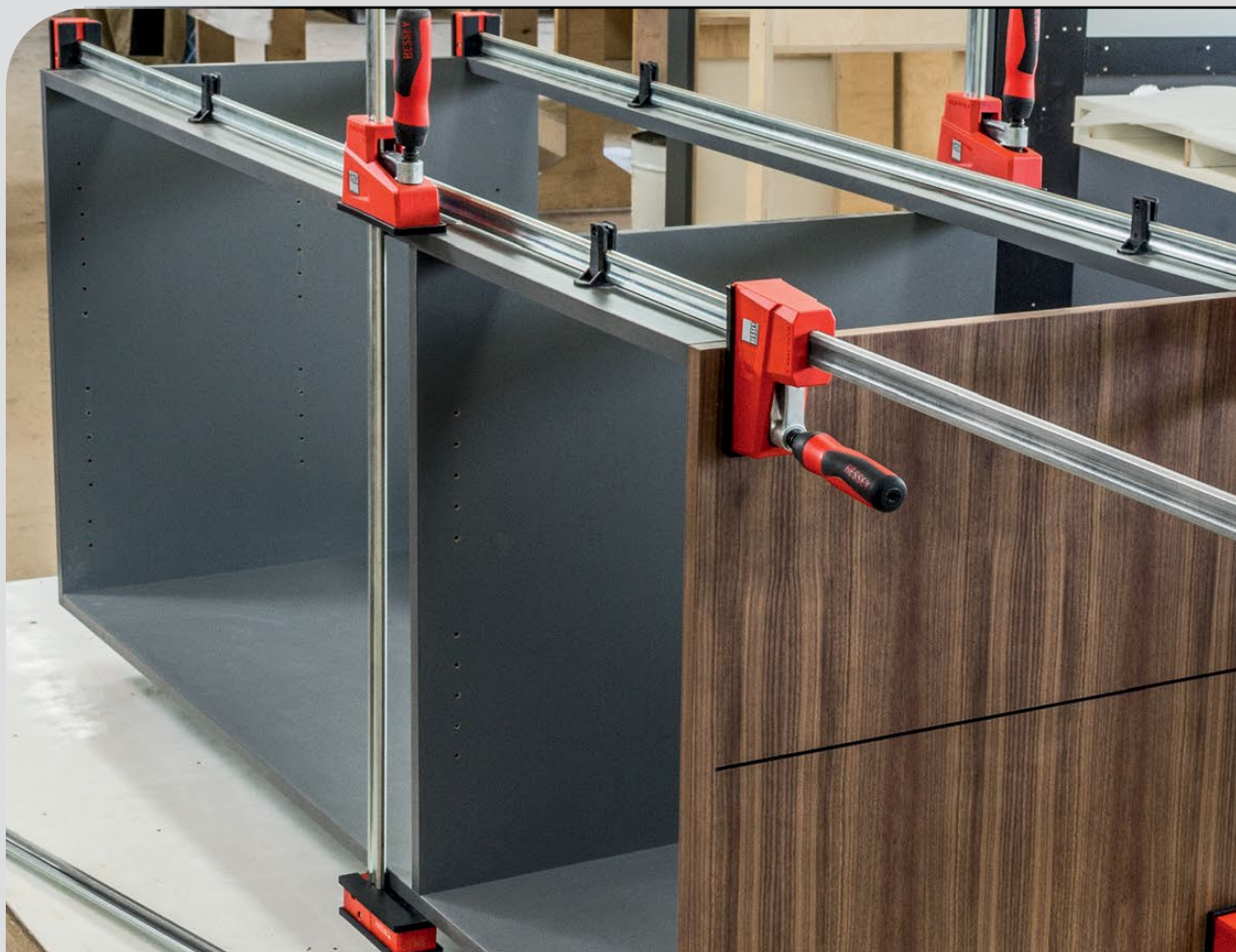


BESSEY® Solutions

K Body® REVO™, 2020-2021



Simply better.™



The REVolution of the K Body REVO



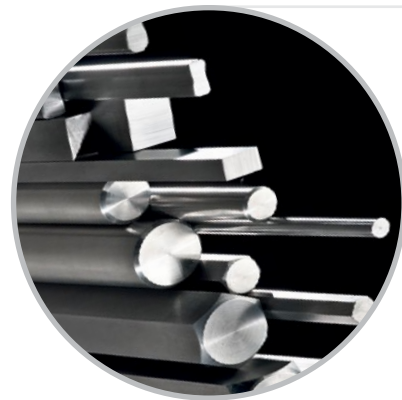
KRE High Performance Parallel Clamps

- Secure clamping force up to 1700 lbs.
- Designed to clamp at 90 degrees to the rail.
- Ergonomic two component handle with steel socket.
- Operating jaw that stays where you put it for easy set up.
- Converts to spreading, no tools required.



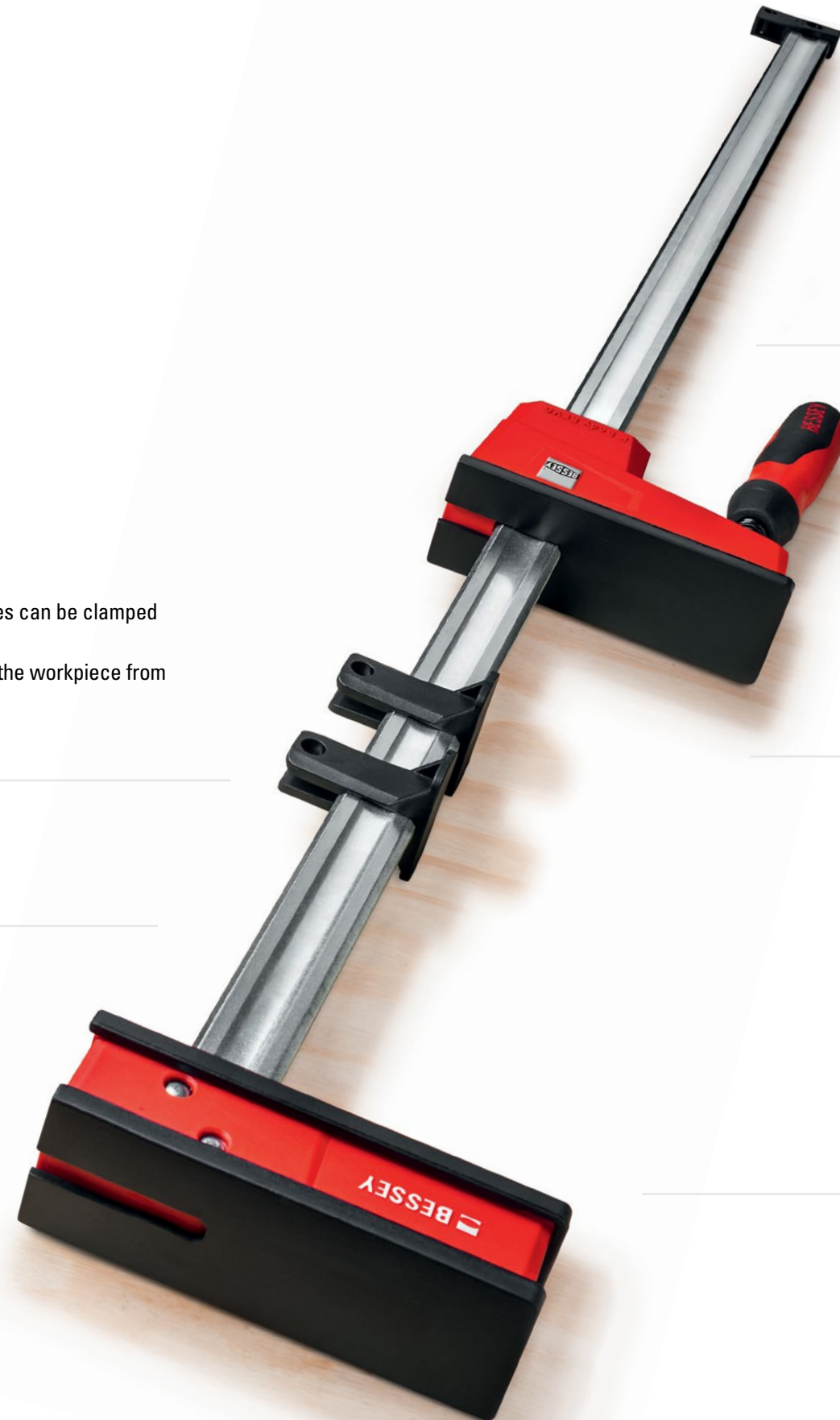
Precise and gentle

- Workpieces with sensitive surfaces can be clamped and spread, parallel to each other.
- Workpiece supports also prevent the workpiece from coming into contact with the rail.



Cold drawn steel rail bar

- Produced and tested at BESSEY's own mills with consistently high quality and the utmost precision in cutting-edge facilities.



Well thought out

- Ergonomically formed 2-component handle with steel socket for applying force with a hex key or driver when desired (max. torque 17 Nm).



Powerful with simple set up and operation

- Secure clamping force up to 1700 lbs.
- For smooth opening, release any clamping pressure in place then, pivot the handle up and away from the rail then, slide the operating jaw to increase the opening.
- For closing and clamping, pivot the handle towards the rail, slide the jaw to the work piece and begin clamping.
- Operating jaw that stays where you put it for easy set up. Position it where you like and apply clamping force.



Large clamping surfaces

- Large clamping surfaces that are attached perpendicular to the rail.
- Three removable pressure caps that are repellent to glue, and also resistant to paint and grease solvents.



KREV – Evolution of the K Body REVO



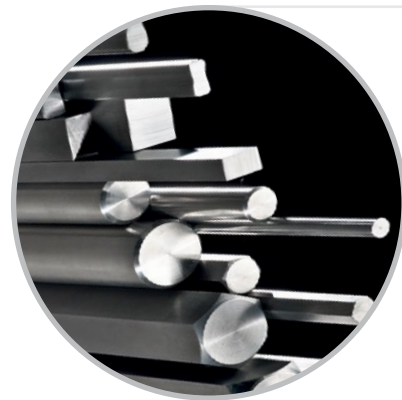
KREV High Performance Parallel Clamps

- Secure clamping force up to 1700 lbs.
- Designed to clamp at 90 degrees to the rail.
- Ergonomic two component handle with steel socket.
- Operating jaw that stays where you put it for easy set up.
- Converts to spreading, no tools required.



Precise and gentle

- Workpieces with sensitive surfaces can be clamped once spread, parallel to each other.
- Workpiece supports also prevent the workpiece from coming into contact with the rail.



Cold drawn steel rail

- Produced and tested at BESSEY's own mills with consistently high quality and the utmost precision in cutting-edge facilities.



Well thought out

- Ergonomically formed 2-component handle with steel socket for applying force with a hex key or driver when desired (max. torque 17 Nm).



Powerful with simple set up and operation

- Secure clamping force up to 1700 lbs.
- For smooth opening, release any clamping pressure in place then, pivot the handle up and away from the rail then, slide the operating jaw to increase the opening.
- For closing and clamping, pivot the handle towards the rail, slide the jaw to the work piece and begin clamping.
- Operating jaw that stays where you put it for easy set up. Position it where you like and apply clamping force.



Vario K Body

- The Vario K Body offers the unique feature of a moveable "fixed" jaw. These allow the balance of workpieces more effectively during set-up and lend the clamp to doing custom clamping set up.
- Large clamping surfaces that are attached perpendicular to the rail.
- Three removable pressure caps that are repellent to glue, and also resistant to paint and grease solvents.



The K Body System



REVOLUTION

The solutions you asked for!

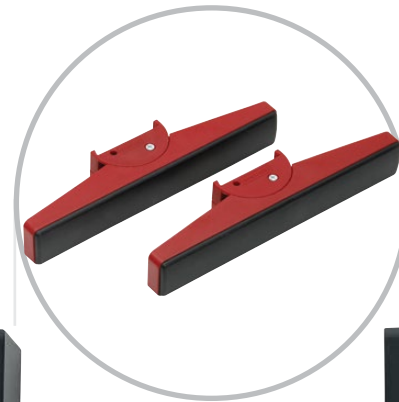
More than a clamp

- The K Body REVO parallel clamp (KRE) can be used for many applications.
- It is not "just a clamp", but rather, part of a comprehensive clamping concept.
- The REVO and Vario REVO are made even more versatile by the innovative accessories.



Variable jaw KRE-VO

- Suitable for all BESSEY K Body REVO parallel clamps KREV and KRE as well as KRV and KR.
- Add an extra one for doing multiple set-ups!

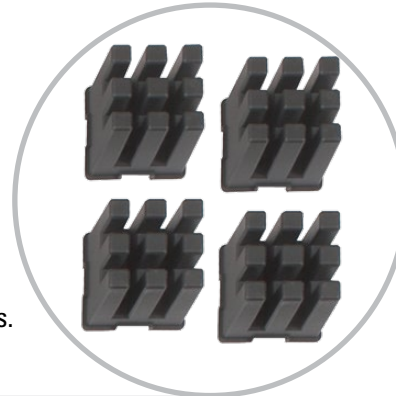


K Body adapter KR-AS

- The soft faced tilting pads can be attached to the clamping jaws and are adjustable within a tilting range of -15 or +15.
- Ideal for glue-ups that are not 90 degrees.
- Soft, gripping surfaces with bevelled surface.

Framing set KP

- Set of four 90 degrees clamping blocks for framing work. The clamping pressure can be set separately for each corner.
- Ideal for pictures, drawers and doors.



K Body extender KBX

- Two becomes one: with the easy-to-use extension made of sturdy aluminum the clamping width can be increased by joining two clamps.

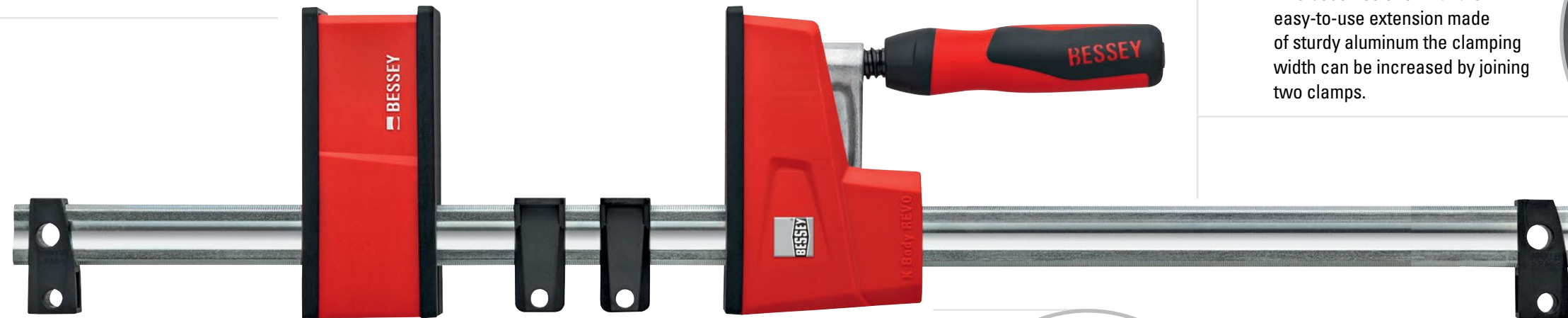


Table clamp TK6

- Securely attaches the clamp to the work surface.
- For creating a more "fixed" clamping system.



Sliding jaw, KRE-J2K

- For KRE and KREV.
- Replacement sliding jaw also works with KR and KRV versions
- Add an extra operating jaw for multiple glue ups.



K Body REVO™ REVOLUTION

Parallel bar clamps



The best parallel clamp in the world with the features you want!

1 Well thought out

Ergonomically formed 2-component handle with steel socket for applying force with a hex key or driver when desired (max. torque 17 Nm).

2 Powerful with simple set up and operation

Secure clamping force up to 1700 lbs. Operating jaw stays where you put it for easy set up. Position where you like and apply clamping force.

3 Precise and gentle

Workpieces with sensitive surfaces can be clamped and spread, parallel to each other. Workpiece supports also prevent the workpiece from coming into contact with the rail.

4 Cold drawn steel rail bar

Produced and tested at BESSEY's own mills with consistently high quality and the utmost precision in cutting-edge facilities.

5 Large clamping surfaces

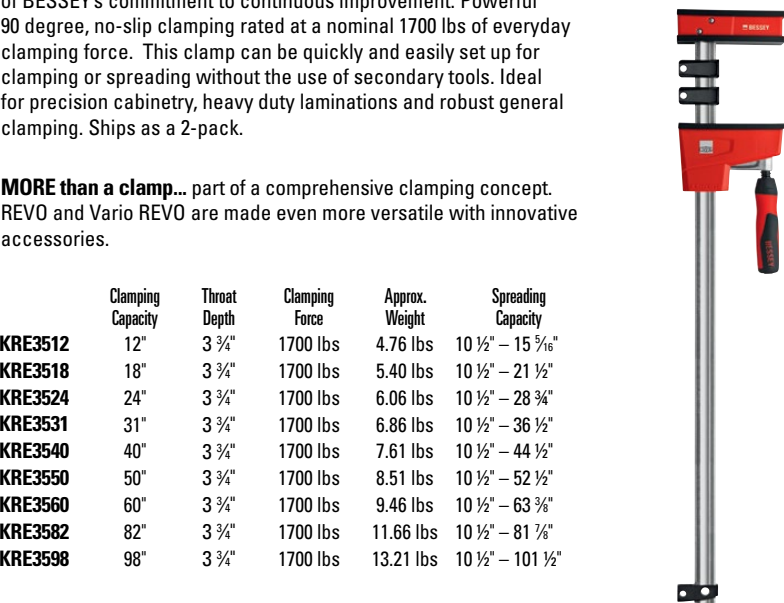
Clamping surfaces are perpendicular to the rail. Three removable pressure caps that are repellent to glue, and resistant to paint and grease solvents. Large surface areas distribute high clamping force evenly.

K Body® REVOLUTION, KRE

The BESSEY fixed jaw parallel clamps are class-leading examples of BESSEY's commitment to continuous improvement. Powerful 90 degree, no-slip clamping rated at a nominal 1700 lbs of everyday clamping force. This clamp can be quickly and easily set up for clamping or spreading without the use of secondary tools. Ideal for precision cabinetry, heavy duty laminations and robust general clamping. Ships as a 2-pack.

MORE than a clamp... part of a comprehensive clamping concept. REVO and Vario REVO are made even more versatile with innovative accessories.

	Clamping Capacity	Throat Depth	Clamping Force	Approx. Weight	Spreading Capacity
KRE3512	12"	3 3/4"	1700 lbs	4.76 lbs	10 1/2" – 15 7/16"
KRE3518	18"	3 3/4"	1700 lbs	5.40 lbs	10 1/2" – 21 1/2"
KRE3524	24"	3 3/4"	1700 lbs	6.06 lbs	10 1/2" – 28 3/4"
KRE3531	31"	3 3/4"	1700 lbs	6.86 lbs	10 1/2" – 36 1/2"
KRE3540	40"	3 3/4"	1700 lbs	7.61 lbs	10 1/2" – 44 1/2"
KRE3550	50"	3 3/4"	1700 lbs	8.51 lbs	10 1/2" – 52 1/2"
KRE3560	60"	3 3/4"	1700 lbs	9.46 lbs	10 1/2" – 63 3/4"
KRE3582	82"	3 3/4"	1700 lbs	11.66 lbs	10 1/2" – 81 7/8"
KRE3598	98"	3 3/4"	1700 lbs	13.21 lbs	10 1/2" – 101 1/2"



Vario K Body REVO™ REVOLUTION

Variable jaw parallel bar clamps



The best parallel clamp in the world with the features you want!

1 Moveable "fixed" jaw

Vario K Body offers a unique moveable "fixed" jaw. This allows more effective balance of workpieces during set-up, and enables custom clamping set up.

2 Well thought out

Ergonomically formed 2-component handle with steel socket for applying force with a hex key or driver when desired (max. torque 17 Nm).

3 Powerful with simple set up and operation

Secure clamping force up to 1700 lbs. Operating jaw stays where you put it for easy set up. Position where you like and apply clamping force.

4 Precise and gentle

Workpieces with sensitive surfaces can be clamped and spread, parallel to each other. Workpiece supports also prevent the workpiece from coming into contact with the rail.

5 Cold drawn steel rail bar

Produced and tested at BESSEY's own mills with consistently high quality and the utmost precision in cutting-edge facilities.

6 Large clamping surfaces

Clamping surfaces are perpendicular to the rail. Three removable pressure caps that are repellent to glue, and resistant to paint and grease solvents. Large surface areas distribute high clamping force evenly.

Vario K Body® REVOLUTION, KREV Clamping System

The BESSEY Vario version has all the same great features as the K Body REVOLUTION...PLUS...the "fixed" jaw can be moved along the bar. This subtle difference allows for a whole range of game-changing applications. Make the clamp longer by connecting them with a KBX20 accessory, add an operating jaw (KRE-J2K) or fixed jaw accessory (KRE-VO) and tackle multiple clamping jobs at the same time. You can add angle adaptors (KR-AS) for tapered parts or, attach the clamping system to a table top for more stability using the TK-6. Imagine the possibilities!

MORE than a clamp... part of a comprehensive clamping concept. REVO and Vario REVO are made even more versatile with these innovative accessories.

	Clamping Capacity	Throat Depth	Clamping Force	Approx. Weight	Spreading Capacity
KREV40	40"	3 3/4"	1700 lbs	8.48 lbs	10 1/2" – 44"
KREV60	60"	3 3/4"	1700 lbs	9.35 lbs	10 1/2" – 63"
KREV78	78"	3 3/4"	1700 lbs	11.66 lbs	10 1/2" – 81"
KREV98	98"	3 3/4"	1700 lbs	13.86 lbs	10 1/2" – 101"

